

Hydraulic Lift Power Kit

BLV10739



JOHN DEERE

INSTALLATION INSTRUCTIONS

LVU30330 06MAY15 (ENGLISH)

1023E, 1025R, 1026R Compact Utility Tractors

John Deere Augusta Works
LVU30330 (06MAY15)

PRINTED IN U.S.A.
COPYRIGHT © 2015
DEERE & COMPANY
Moline, Illinois

All rights reserved.
A John Deere ILLUSTRATION™ Manual

LVU30330-19-06MAY15

Introduction

IMPORTANT: Read through this instruction thoroughly and familiarize yourself with the tractor before installing parts.

This instruction demonstrates procedures for installing the hydraulic lift power kit on a 1 series tractor.

WS68074,0000466 -19-24APR15-1/1

Recognize Safety Information

This is a safety-alert symbol. When you see this symbol on your machine or in this manual, be alert to the potential for personal injury.

Follow recommended precautions and safe operating practices.



T81389 —UN—28JUN13

DX,ALERT -19-29SEP98-1/1

Understand Signal Words

A signal word—DANGER, WARNING, or CAUTION—is used with the safety-alert symbol. DANGER identifies the most serious hazards.

DANGER or WARNING safety signs are located near specific hazards. General precautions are listed on CAUTION safety signs. CAUTION also calls attention to safety messages in this manual.

▲ DANGER

▲ WARNING

▲ CAUTION

TS187 —19—30SEP88

DX,SIGNAL -19-03MAR93-1/1

Follow Safety Instructions

Carefully read all safety messages in this manual and on your machine safety signs. Keep safety signs in good condition. Replace missing or damaged safety signs. Be sure new equipment components and repair parts include the current safety signs. Replacement safety signs are available from your John Deere dealer.

There can be additional safety information contained on parts and components sourced from suppliers that is not reproduced in this operator's manual.

Learn how to operate the machine and how to use controls properly. Do not let anyone operate without instruction.

Keep your machine in proper working condition. Unauthorized modifications to the machine may impair the function and/or safety and affect machine life.



TS201 —UN—15APR13

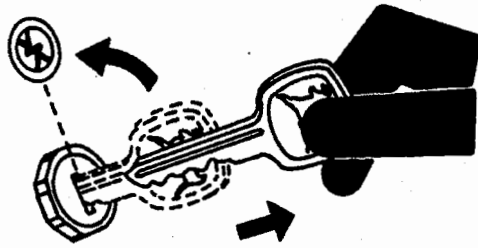
If you do not understand any part of this manual and need assistance, contact your John Deere dealer.

DX,READ -19-16JUN09-1/1

Park Machine Safely

Before working on the machine:

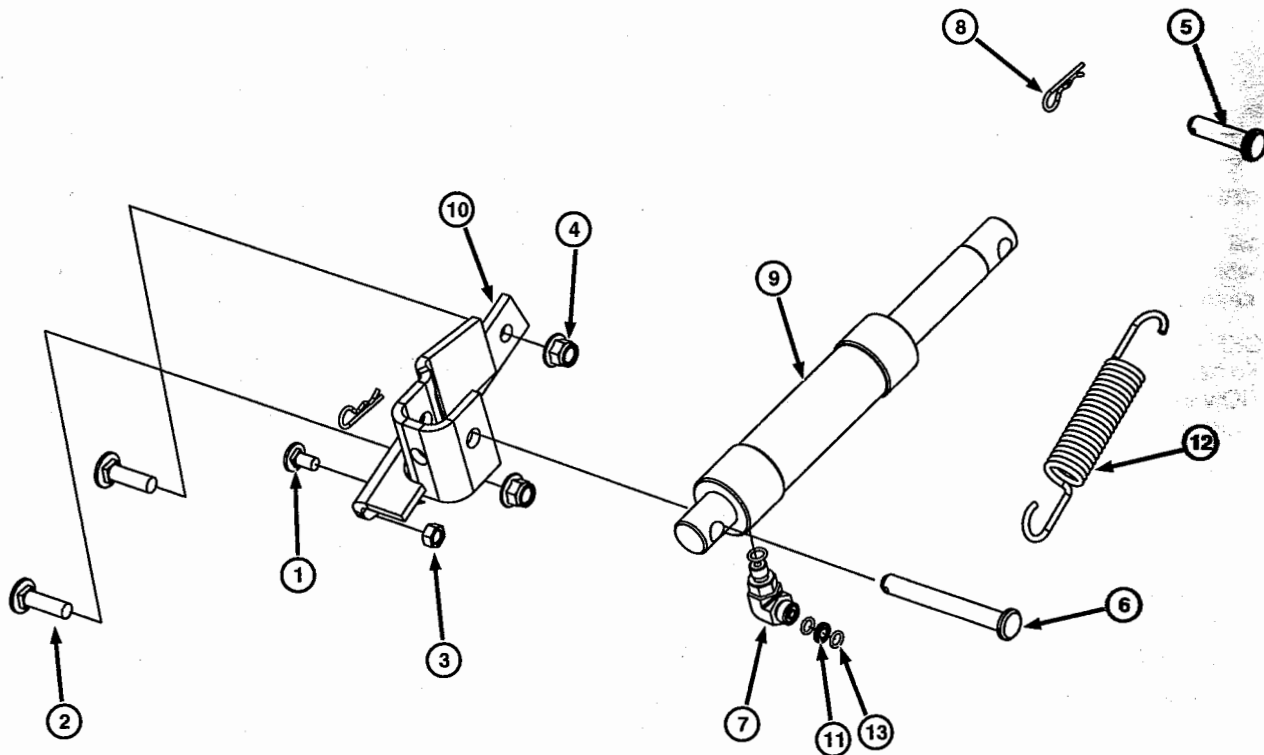
- Lower all equipment to the ground.
- Stop the engine and remove the key.
- Disconnect the battery ground strap.
- Hang a "DO NOT OPERATE" tag in operator station.



TS230 —UN—24MAY89

DX,PARK -19-04JUN90-1/1

Parts in Kit



LV23841 —UN—28APR15

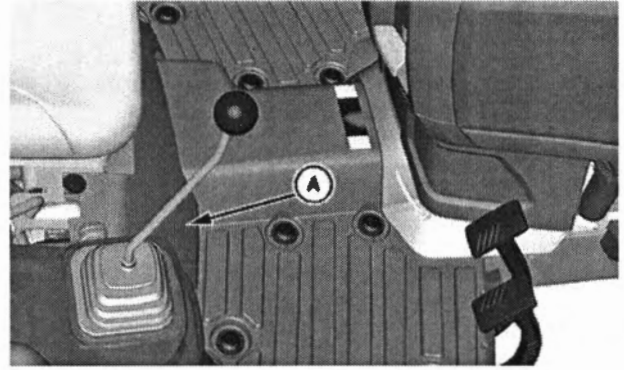
Item	Description	Quantity	Part Number	Item	Description	Quantity	Part Number
1	Bolt, M8 x 16	1	03M7183	8	Pin, Spring Locking	2	J16931
2	Bolt, M10 x 35	2	03M7238	9	Cylinder	1	LVA15396
3	Nut, M8	1	14M7273	10	Bracket	1	LVU17736
4	Lock Nut, M10	2	14M7465	11	Orifice	1	LVU16655
5	Pin, M12 x 50	1	45M7042	12	Extension Spring	1	LVU26526
6	Pin, M12 x 100	1	45M7048	13	O-Ring	1	T77814
7	Elbow Fitting	1	61H1003				

UP00731,000032B -19-29APR15-1/1

Prepare Machine

1. Park tractor on level surface and engage park brake.
2. Place wheel chocks or wood blocks in front of and behind front wheels.
3. Remove left rear wheel.
4. Remove rear panel (A).

A—Rear Panel



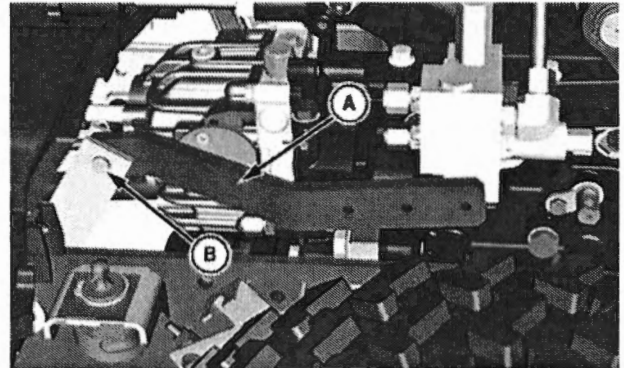
LV23835—UN—28APR15

UP00731,0000331 -19-05MAY15-1/2

5. If mechanical lift was installed at the factory, remove drilled pin (B) and lift link (A).

A—Lift Link

B—Drilled Pin



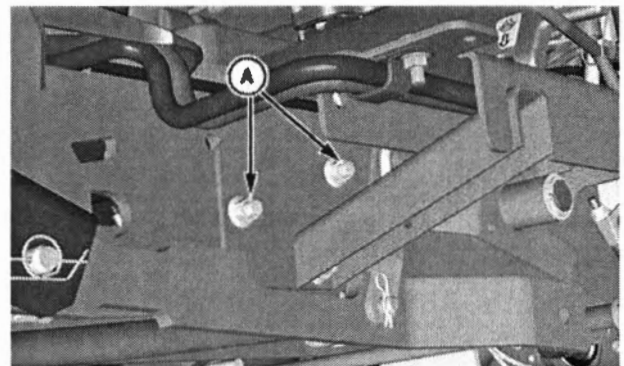
LV23836—UN—28APR15

UP00731,0000331 -19-05MAY15-2/2

Install Hydraulic Lift Kit

CAUTION: Escaping fluid under pressure can penetrate the skin causing serious injury. Avoid the hazard by relieving pressure before disconnecting hydraulic or other lines. Tighten all connections before applying pressure. Search for leaks with a piece of cardboard. Protect hands and body from high pressure fluids.

If an accident occurs, see a doctor immediately. Any fluid injected into the skin must be surgically removed within a few hours or gangrene may result. Doctors unfamiliar with this type of injury should reference a knowledgeable medical source. Such information is available from Deere & Company Medical Department in Moline, Illinois, U.S.A.



A—M10 Nuts

LV23843—UN—28APR15

See notes on next page!

1. Rotate mower height control knob counterclockwise to point to the "install" position (rear draft arms will be all the way down).
2. Remove two M10 bolts and M10 nuts (A) from location shown. Discard bolts and nuts.

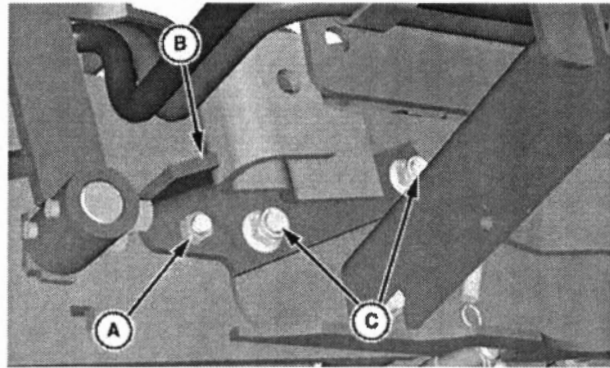
Continued on next page

WS68074,0000468 -19-30APR15-1/5

3. Assemble M8x16 carriage bolt (A) to lift cylinder bracket (B) with M8 nut. (This bolt and nut is used as a stop button to the tractor frame for the cylinder bracket when the cylinder is under load.)
4. Install lift cylinder bracket to frame with two M10x35 carriage bolts (C) and M10 locknuts. Leave hardware loose.

A—M8x16 Carriage Bolt
B—Lift Cylinder Bracket

C—M10x35 Carriage Bolts



LV23844—UN—30APR15

WS68074,0000468 -19-30APR15-2/5

5. Install the 11.1 x 14.2 mm threaded elbow fitting (A) onto cylinder (B). Leave fitting loose for ease of hose placement on machine.
6. Install O-ring (C) and orifice (D) inside mid mower lift hydraulic hose (E). Attach mid mount lift hydraulic hose to elbow fitting.

A—Elbow Fitting
B—Cylinder
C—O-Ring

D—Orifice
E—Mid Mower Lift Hydraulic Hose



LV23845—UN—30APR15

Continued on next page

WS68074,0000468 -19-30APR15-3/5

Notes:

1. To install Lift Assist Spring as pictured, do not install lift cylinder bracket at this point.
2. Remove bolt securing fuel line clamp to the bottom of the foot support.
3. Remove remaining bolt securing foot support plate to frame.
4. Tape soda-pop carton material to side of frame to protect finish when orienting foot support plate.
5. Connect one end of spring to rockshaft lever, as pictured.
6. Lift and orient foot support plate so the other end of spring can be hooked into it, as pictured. There should be enough slack in fuel lines to allow this without disconnecting. Be sure to fuel tank tabs are on top of the plate when re-installing.

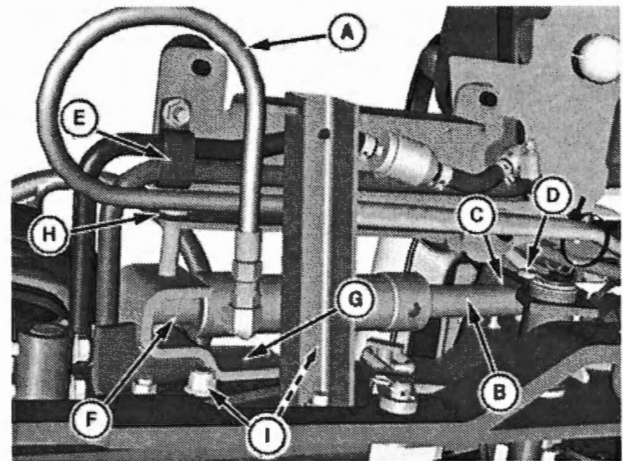
NOTE: Make sure cylinder rod end is fully retracted before installing cylinder onto machine.

Cylinder hose (A) is only shown installed at this point for picture clarity.

7. Push cylinder rod end (B) into cylinder barrel.
8. Install cylinder rod end of cylinder assembly to lift support bracket (C) with M12x50 drilled pin (D) and spring locking pin.

NOTE: You need to loosen hardware for hose clamp (E) in order to install cylinder base end (F).

9. Loosen hardware for hose clamp (E).
10. Install cylinder base end (F) of cylinder assembly to lift cylinder bracket (G) with M12x100 drilled pin and spring locking pin (H).
11. Tighten two previously installed M10x35 carriage bolts and M10 locknuts (I) holding lift cylinder bracket to frame. Torque to 73 N·m (54 lb-ft).
12. Tighten hardware for hose clamp.



A—Cylinder Hose
B—Cylinder Rod End
C—Lift Support Bracket
D—M12x50 Drilled Pin
E—Hose Clamp

F—Cylinder Base End
G—Lift Cylinder Bracket
H—Spring Locking Pin
I—M10 Locknuts

WS68074,0000468 -19-30APR15-4/5

LV23846—UN—28APR15

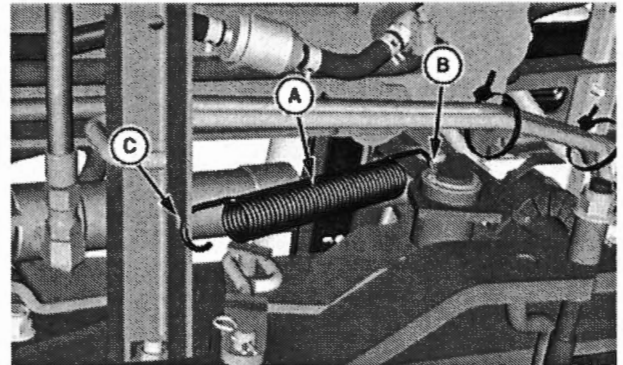
NOTE: The Hydraulic Lift Power Kit must be used with either the SCV Line Kit or the Independent Valve and Hose Kit. Install kit as needed at this point. See a John Deere dealer for correct kits to order.

13. Install lift assist spring (A) to hole in lift support bracket (B) and hole (C) in frame. **NOTE:**

NOTE: The Hydraulic Lift Power Kit must be used with either the SCV Link Kit or the Independent Valve and Hose Kit. Install kit as needed at this point.

A—Lift Assist Spring
B—Lift Support Bracket

C—Hole



WS68074,0000468 -19-30APR15-5/5

LV23847—UN—28APR15

